

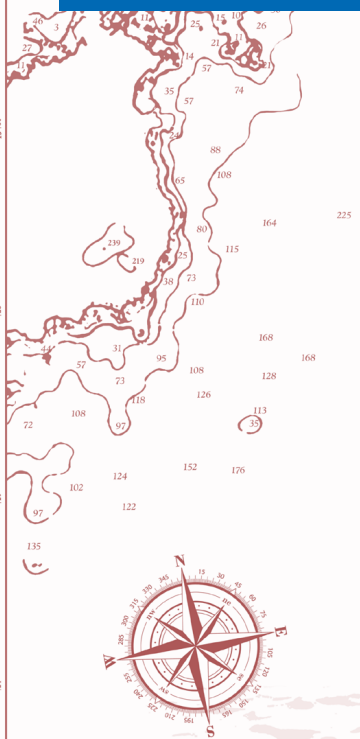


# KREUZFAHRT-RANKING 2016

Übersicht aktuell in Europa fahrender Schiffe



PLATZ	REEDEREI	SCHIFFSNAME	JUNGFERNFAHRT	PASSAGIERE	KOSTEN(EUR)	FLAGGE	NABU-WERTUNG
1	AIDA	AIDAprima	2015	3.250	455 Mio	Italien	🌱🌱🌱🌱
2	Hapag-Lloyd	Europa 2	2013	500	360 Mio	Malta	🌱🌱🌱🌱
3	TUI	Mein Schiff 3/4/5	2014-2016	2.500	415 Mio	Malta	🌱🌱🌱🌱
6	AIDA	AIDAsol	2011	2.700	350 Mio	Italien	🌱🌱🌱🌱
6	Costa	Diadema	2014	4.900	556 Mio	Italien	🌱🌱🌱🌱
6	Costa	Fascinosa	2012	3.800	500 Mio	Italien	🌱🌱🌱🌱
9	Hapag-Lloyd	Bremen/Hanseatic/Europa	1990-1993	164-184	k.A.	Bahamas	🌱🌱🌱🌱
12	AIDA	AIDAvita/aura	2002-2003	1.250	315 Mio	Italien	🌱🌱🌱🌱
12	AIDA	AIDAluna/mar	2007-2013	2.000-2.100	315-350 Mio	Italien	🌱🌱🌱🌱
12	AIDA	AIDAcara	1996	1.300	k.A.	Italien	🌱🌱🌱🌱
12	AIDA	AIDAdiva/bella/blu/stella	2007-2013	2.000-2.100	315-350 Mio	Italien	🌱🌱🌱🌱
12	Celebrity Cruises	Equinox/Solstice/Equinox	2008-2012	2.850	575 Mio	Malta	🌱🌱🌱🌱
12	Celebrity Cruises	Silhouette/Reflection	2008-2012	2.850	575 Mio	Malta	🌱🌱🌱🌱
12	Costa	Luminosa/Deliziosa	2009-2010	2.800	350 Mio	Italien	🌱🌱🌱🌱
12	Costa	Favolosa	2011	3.800	500 Mio	Italien	🌱🌱🌱🌱
12	Costa	Mediterranea/Atlantica	2003	2.680	300 Mio	Italien	🌱🌱🌱🌱
12	Cunard	Queen Mary 2	2004	3.000	870 Mio	Bermuda	🌱🌱🌱🌱
12	Cunard	Queen Elizabeth/Queen Victoria	2007-2010	2.000	500-870 Mio	Bermuda	🌱🌱🌱🌱
12	Holland America	Koningsdam	2016	2.660	470 Mio	Niederlande	🌱🌱🌱🌱
12	Holland America	Eurodam/Nieuw Amsterdam	2008-2010	2.100	400 Mio	Niederlande	🌱🌱🌱🌱
12	MSC	Fantasia	2008	3.950	500 Mio	Panama	🌱🌱🌱🌱
12	MSC	Splendida/Divina/Preziosa	2009-2013	3.950	550 Mio	Panama	🌱🌱🌱🌱
12	MSC	Musica/Magnifica/Orchestra/Poesia	2006-2010	3.000	360 Mio	Panama	🌱🌱🌱🌱
12	Norwegian	Jade	2006	2.450	350 Mio	Bahamas	🌱🌱🌱🌱
12	Norwegian	Star	2001	2.350	380 Mio	Bahamas	🌱🌱🌱🌱
12	P&O Cruises	Britannia	2015	3.611	560 Mio	UK	🌱🌱🌱🌱
12	Ponant	Le Lyrial	2015	264	130 Mio	Frankreich	🌱🌱🌱🌱
12	Royal Caribbean	Ovation/Anthem of the Seas	2015-2016	4.100	784 Mio	Bahamas	🌱🌱🌱🌱
12	Royal Caribbean	Harmony of the Seas	2016	6.300	1.030 Mio	Bahamas	🌱🌱🌱🌱
12	Royal Caribbean	Oasis/Allure of the Seas	2009-2010	5.400	800 Mio	Bahamas	🌱🌱🌱🌱
12	TUI	Mein Schiff 1/2	1996-1997	1.900	k.A.	Malta	🌱🌱🌱🌱



Weitere Informationen zur NABU-Wertung entnehmen Sie bitte: [www.nabu.de/kreuzfahrtranking-2016](http://www.nabu.de/kreuzfahrtranking-2016)